

Trumpet in B \flat

20 Minute Routine

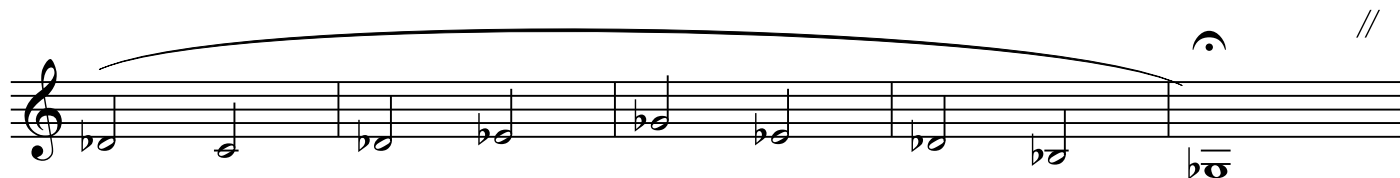
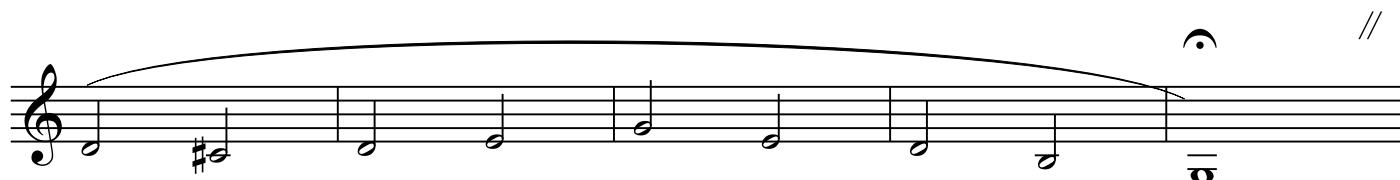
Compiled by Greg Wing, Professor of Music/Trumpet
Morehead State University

Flow Studies Rest as long as you play & make sure you play each with a beautiful full sound.

Four staves of musical notation for Flow Studies. Each staff contains a single melodic line with a slur over the entire phrase and a repeat sign (//) at the end. The notation is in 4/4 time and uses a key signature of one flat (B \flat). The first staff starts on G4 and ends on G4. The second staff starts on G4 and ends on G4. The third staff starts on G4 and ends on G4. The fourth staff starts on G4 and ends on G4.

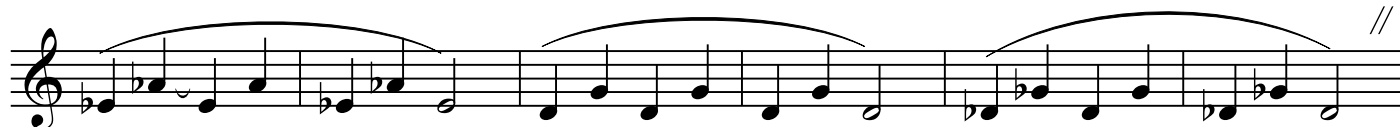
Slight pause

Three staves of musical notation for Flow Studies. Each staff contains a single melodic line with a slur over the entire phrase and a repeat sign (//) at the end. The notation is in 4/4 time and uses a key signature of one flat (B \flat). The first staff starts on G4 and ends on G4. The second staff starts on G4 and ends on G4. The third staff starts on G4 and ends on G4.



Lip Slurs

Each note must be flowing into the next one without hesitation



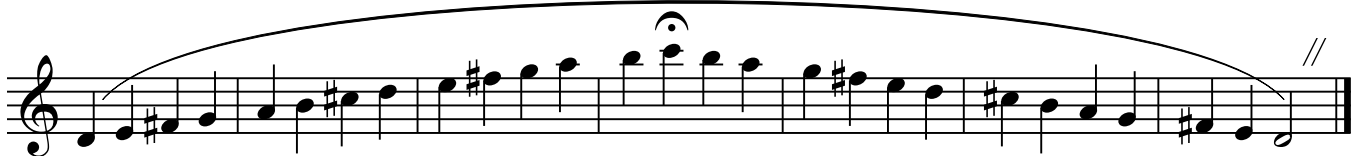
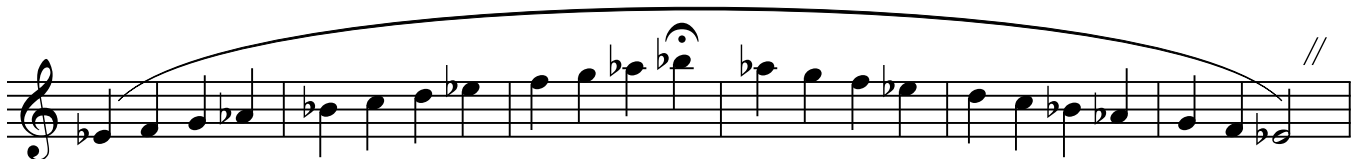
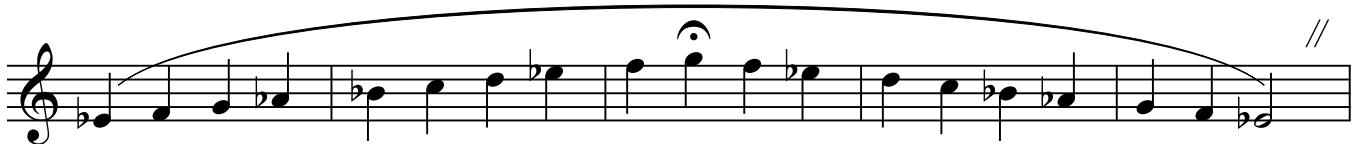
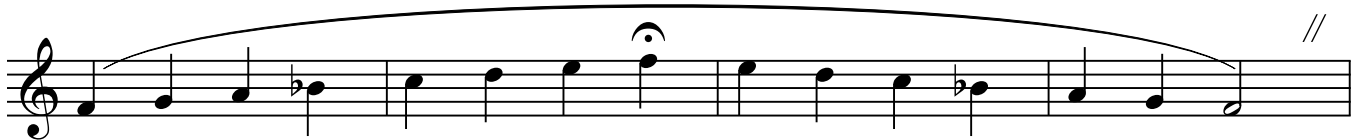
Tonguing

Play 3 x's with "too" and 3 x's with "doo"



Expanding Scales

The quality of sound must remain the same as you ascend.



I am convinced that a "Daily Practice Routine of Fundamentals" is crucial to a trumpet player's development. This 20 Minute Routine is just the beginning. The secret is to DO IT every day! Take a Big Breath and blow through the instrument while thinking of a beautiful full sound. Consistent practice is the Key! I know you can do it. Good Luck!!!

Professor Greg Wing
Morehead State University
g.wing@moreheadstate.edu
<http://www.gregwingtrumpet.com>